

# Pansy Patch Extra Happiness

Melissa Sepowitz  
[melissa@thestampingninja.com](mailto:melissa@thestampingninja.com)  
[thestampingninja.com](http://thestampingninja.com)



1. Begin with a 5 1/2" x 8 1/2" piece of So Succulent card stock, score and fold at 4 1/4" to form your card base.
2. Wrap a 6" piece of So Succulent ribbon around a 4" x 5 1/4" piece of Pansy Petals designer series paper (DSP), secure the ends with adhesive, and adhere to the card base using Stampin' SEAL.

# Pansy Patch Extra Happiness

Melissa Sepowitz  
[melissa@thestampingninja.com](mailto:melissa@thestampingninja.com)  
[thestampingninja.com](http://thestampingninja.com)



3. Stamp your sentiment on a piece of Basic White card stock using So Succulent ink.
4. Crop the sentiment and a piece of So Succulent card stock with the Stitched So Sweetly dies using your Stampin' Cut & Emboss machine.
5. Layer and adhere the two labels and attach to the card (over the ribbon) using Stampin' SEAL.



6. Stamp three large pansies on a piece of Basic White card stock as follows: Stamp the large background pansy with Pale Papaya ink. Second, stamp the large, detailed pansy stamp with Calypso Coral ink, using the stamp off technique. (stamp off means to ink up your stamp, stamp on a piece of scrap paper, then without re-inking your stamp, stamp your image where desired) Third, stamp the flat inner part of the pansy using Pale Papaya ink. Fourth, stamp the large, detailed center using Calypso Coral ink, using the stamp off technique. Fifth, stamp the small, detailed center using Tuxedo Memento black ink. Lastly, stamp the center using So Saffron ink.

# Pansy Patch Extra Happiness

Melissa Sepowitz  
[melissa@thestampingninja.com](mailto:melissa@thestampingninja.com)  
[thestampingninja.com](http://thestampingninja.com)



- Stamp two small pansies on a piece of Basic White card stock as follows: Stamp the background pansy with So Saffron ink. Second, stamp the detailed pansy stamp with Bumblebee ink. Third, stamp the detailed center using Tuxedo Memento black ink. Lastly, stamp the center using Calypso Coral, using the stamp off technique.
- On another piece of Basic White card stock, stamp three short leaves and three long leaves using So Succulent and Evening Evergreen ink.
- Crop all the pansies and leaves with the Pansy dies using your Stampin' Cut & Emboss machine.
- Adhere the leaves to the pansies using Glue Dots and attach the pansies to the card using Stampin' Dimensionals.
- Attach three 2021-2023 In Color Jewels to the card as shown.

# Pansy Patch Extra Happiness

Melissa Sepowitz  
[melissa@thestampingninja.com](mailto:melissa@thestampingninja.com)  
[thestampingninja.com](http://thestampingninja.com)



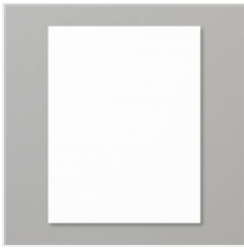
The inside of the card is just as important. Be sure to add another beautiful pansy in there too!



Melissa

# Pansy Patch Extra Happiness

Melissa Sepowitz  
[melissa@thestampingninja.com](mailto:melissa@thestampingninja.com)  
[thestampingninja.com](http://thestampingninja.com)



[Basic White 8-1/2" X 11" Cardstock - 159276](#)

Price: \$9.75



[Paper Trimmer - 152392](#)

Price: \$25.00



[Tuxedo Black Memento Ink Pad - 132708](#)

Price: \$6.00



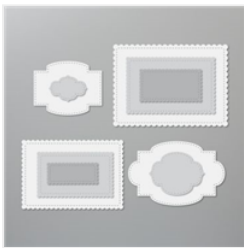
[Calyпсо Coral Classic Stampin' Pad - 147101](#)

Price: \$7.50



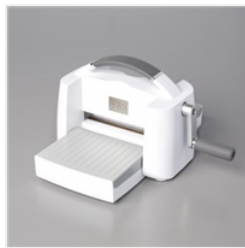
[So Saffron Classic Stampin' Pad - 147109](#)

Price: \$7.50



[Stitched So Sweetly Dies - 151690](#)

Price: \$32.00



[Stampin' Cut & Emboss Machine - 149653](#)

Price: \$120.00



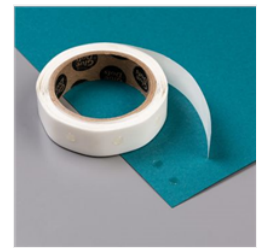
[Paper Snips Scissors - 103579](#)

Price: \$10.00



[Stampin' Seal - 152813](#)

Price: \$8.00



[Glue Dots - 103683](#)

Price: \$5.25



[Stampin' Dimensionals - 104430](#)

Price: \$4.00

Add All to Cart