

# Blessings of Home Catty CASE

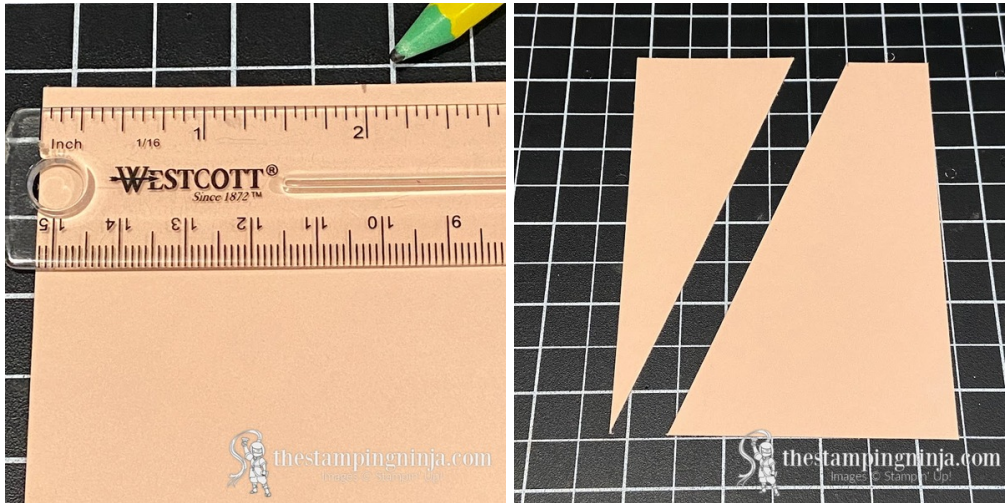
Melissa Sepowitz  
[melissa@thestampingninja.com](mailto:melissa@thestampingninja.com)  
[thestampingninja.com](http://thestampingninja.com)



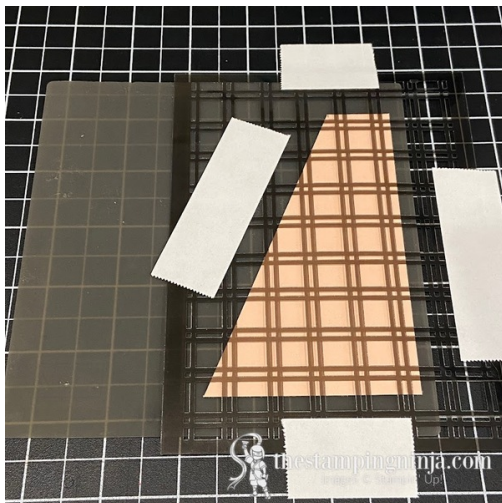
1. Begin with a 5 1/2" x 8 1/2" piece of Petal Pink cardstock, score and fold at 4 1/4" to form your card base.
2. With a ruler, mark the top edge of a 3" x 4 3/4" piece of Petal Pink cardstock at the 2" mark. Place it on your Paper Trimmer and cut from that 2" mark diagonally to the lower left corner.

# Blessings of Home Catty CASE

Melissa Sepowitz  
[melissa@thestampingninja.com](mailto:melissa@thestampingninja.com)  
[thestampingninja.com](http://thestampingninja.com)



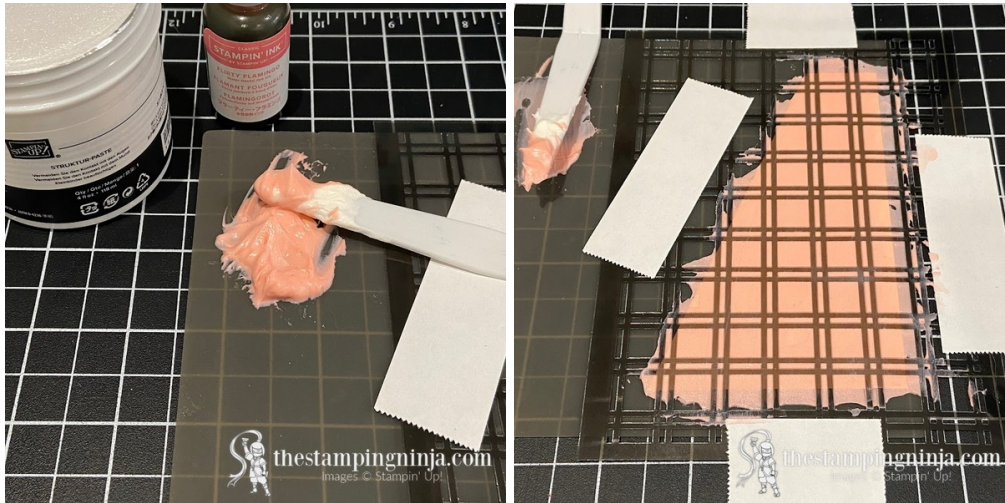
3. Apply a tiny bit of Stampin' SEAL to the larger piece that you just cut and place on the right side of your Silicone Craft Sheet. (hint- the Stampin' SEAL will hold it in place but release easy from the silicone.)
4. Cover the piece with one of the Artistic Mix Decorative Masks and secure in place with some removable tape.



5. Scoop a small bit of Embossing Paste on to the left side of the Silicone Craft Sheet and mix in one drop of Flirty Flamingo ink.
6. Mix well with your Palette Knife and spread evenly over the mask.

# Blessings of Home Catty CASE

Melissa Sepowitz  
[melissa@thestampingninja.com](mailto:melissa@thestampingninja.com)  
[thestampingninja.com](http://thestampingninja.com)



7. Remove the mask, rinse well, and let the embossed piece dry.
8. Stamp your flower image on a piece of Very Vanilla cardstock using Shaded Spruce ink and your sentiment on a piece of Smoky Slate cardstock using Stazon Jet Black ink.
9. Using your Stampin' Cut & Emboss machine, crop the following: your sentiment with the 2nd largest circle from the Stylish Shapes dies, the flower and six leaves in Mint Macaron cardstock from the Flowers of Hope dies.



10. Adhere the flower to the sentiment, overlapping the right side, using Multipurpose Liquid Glue (MLG). (hint- lay your pieces on the front of the card, **without adhering**, to ensure that both pieces will fit when glued together.)



# Blessings of Home Catty CASE

Melissa Sepowitz  
[melissa@thestampingninja.com](mailto:melissa@thestampingninja.com)  
[thestampingninja.com](http://thestampingninja.com)



11. Attach three leaves each to the top and bottom of the flowers as shown with MLG.



12. Carefully remove your embossed piece from the Silicone Mat and adhere it to the front of the card using MLG. (hint- to clean your Silicone Craft Sheet, just peel the dried paste off.)

# Blessings of Home Catty CASE

Melissa Sepowitz  
[melissa@thestampingninja.com](mailto:melissa@thestampingninja.com)  
[thestampingninja.com](http://thestampingninja.com)



13. Cut a 15 1/2" piece of Natural Finish ribbon, trim the ends diagonally, and adhere to the front of the card using Stampin' SEAL.



14. Adhere the flowers and sentiment to the card using Stampin' Dimensionals.



15. Attach five Iridescent Pearl Basic Jewels as shown.



# Blessings of Home Catty CASE

Melissa Sepowitz  
[melissa@thestampingninja.com](mailto:melissa@thestampingninja.com)  
[thestampingninja.com](http://thestampingninja.com)

16. **FOR AN ADDED TOUCH:** Add a piece of matching Subtles designer series paper (DSP) to the envelope flap. Glue a 2 1/2" x 6" piece to the outside of the envelope and trim off the excess with your Paper Snips.



Melissa

# Blessings of Home Catty CASE

Melissa Sepowitz  
[melissa@thestampingninja.com](mailto:melissa@thestampingninja.com)  
[thestampingninja.com](http://thestampingninja.com)



Blessings Of Home  
Bundle (English) -  
157939

Price: \$51.25



Mint Macaron 8-  
1/2" X 11"  
Cardstock -  
138337

Price: \$9.25



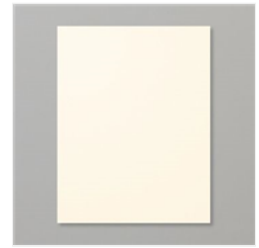
Petal Pink 8-1/2" X  
11" Cardstock -  
146985

Price: \$9.25



Smoky Slate 8-1/2"  
X 11" Cardstock -  
131202

Price: \$9.25



Very Vanilla 8-1/2"  
X 11" Cardstock -  
101650

Price: \$10.25



Paper Trimmer -  
152392

Price: \$25.00



Flirty Flamingo  
Classic Stampin'  
Ink Refill - 141402

Price: \$4.00



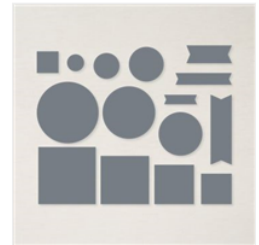
Shaded Spruce  
Classic Stampin'  
Pad - 147088

Price: \$8.00



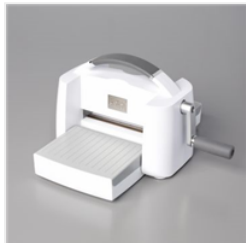
Jet Black Stazon  
Pad - 101406

Price: \$10.00



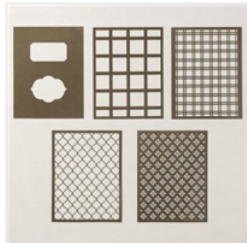
Stylish Shapes  
Dies - 159183

Price: \$30.00



Stampin' Cut &  
Emboss Machine -  
149653

Price: \$125.00



Artistic Mix  
Decorative Masks -  
159178

Price: \$10.00



Embossing Paste -  
141979

Price: \$8.00



Palette Knives -  
142808

Price: \$5.00



Silicone Craft  
Sheet - 127853

Price: \$6.50

# Blessings of Home Catty CASE

Melissa Sepowitz  
[melissa@thestampingninja.com](mailto:melissa@thestampingninja.com)  
[thestampingninja.com](http://thestampingninja.com)



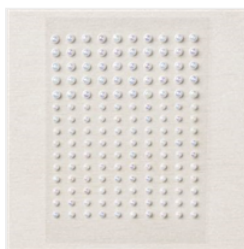
Natural Finish 7/8"  
(2.2 Cm) Ribbon -  
159051

Price: \$8.50



Paper Snips  
Scissors - 103579

Price: \$11.00



Iridescent Pearl  
Basic Jewels -  
158987

Price: \$7.50



Stampin' Seal -  
152813

Price: \$8.00



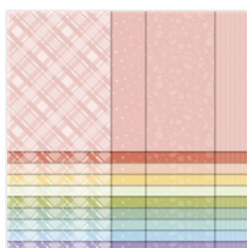
Multipurpose  
Liquid Glue -  
110755

Price: \$4.00



Stampin'  
Dimensionals -  
104430

Price: \$4.25



Subtles 6" X 6"  
(15.2 X 15.2 Cm)  
Designer Series  
Paper - 159255

Price: \$12.00

Add All to Cart