

# A Country Flowers CASE

Melissa Sepowitz  
[melissa@thestampingninja.com](mailto:melissa@thestampingninja.com)  
[thestampingninja.com](http://thestampingninja.com)



1. Begin with a 5 1/2" x 8 1/2" piece of Crumb Cake Cardstock, score at 1 1/4" and 4 1/4" to form your card base.
2. Burnish your score lines with your Bone Folder.
3. Layer and adhere a 2 5/8" x 5 1/8" piece of Country Woods DSP to a 2 3/4" x 5 1/4" piece of Misty Moonlight Cardstock and adhere to the front of the card base.

# A Country Flowers CASE

Melissa Sepowitz  
[melissa@thestampingninja.com](mailto:melissa@thestampingninja.com)  
[thestampingninja.com](http://thestampingninja.com)



4. Open the card up and adhere a 1 1/4" x 5 1/2" piece of Country Woods DSP to the far left and right sides.



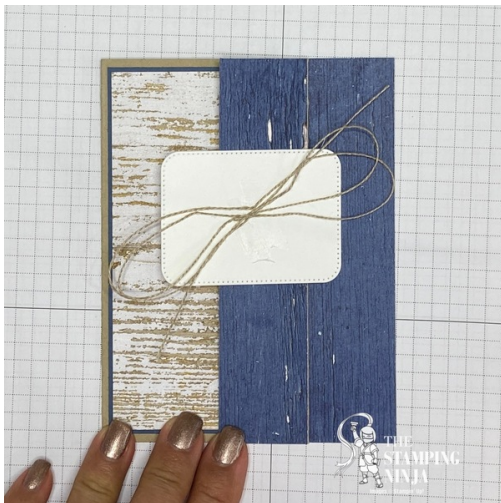
5. Crop a piece of Basic White cardstock with the smallest rectangle from the Nested Essentials dies with your cut and emboss machine. Adhere it to the front of the card, ensuring that you only apply glue to small strip of DSP.

# A Country Flowers CASE

Melissa Sepowitz  
[melissa@thestampingninja.com](mailto:melissa@thestampingninja.com)  
[thestampingninja.com](http://thestampingninja.com)



6. Shape a long piece of Linen Thread into a double bow and adhere it to the center of the Basic White rectangle using Stampin' SEAL.



7. Stamp your flowers on a piece of Basic White cardstock and your kettle on a piece of Smoky Slate cardstock using Memento black ink. Then, color them with the following Stampin' Blends; Lemon Lolly, Misty Moonlight, Old Olive, Petal Pink, and Pool Party.
8. Crop your images, two large leaf sets, and one small leaf in Old Olive cardstock with the Country Flowers dies.

# A Country Flowers CASE

Melissa Sepowitz  
[melissa@thestampingninja.com](mailto:melissa@thestampingninja.com)  
[thestampingninja.com](http://thestampingninja.com)



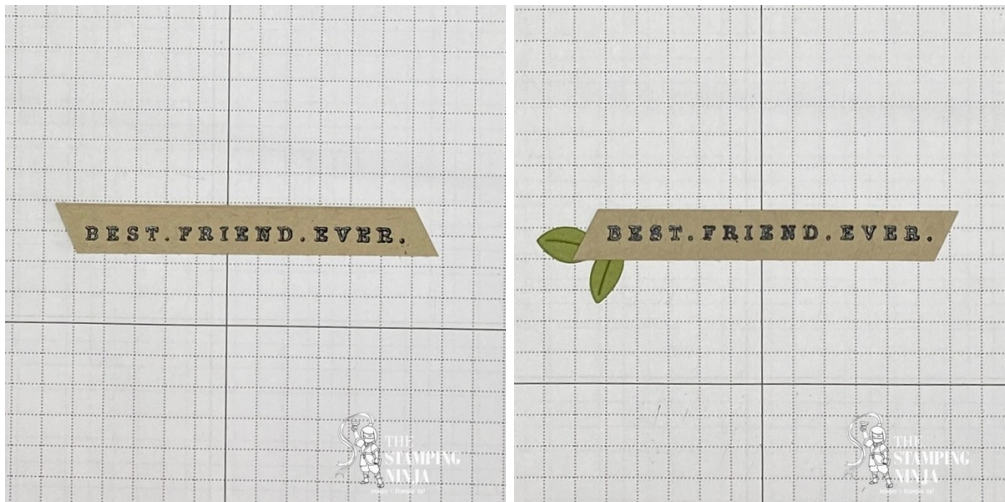
9. Adhere the flowers and large leaf sets together with Multipurpose Liquid Glue, then attach them to the card using Stampin' Dimensionals.



10. Stamp your sentiment on 3/8" x 4 1/2" piece of Crumb Cake Cardstock with Versamark. Quickly dust it with black embossing powder, tap off the excess, and set in place with your Heat Tool.
11. Trim the ends of the sentiment diagonally and adhere the small leaves to the left side.

# A Country Flowers CASE

Melissa Sepowitz  
[melissa@thestampingninja.com](mailto:melissa@thestampingninja.com)  
[thestampingninja.com](http://thestampingninja.com)



12. Place three small Stampin' Dimensionals on the blue DSP, below the kettle, and lay your sentiment on top of them.



13. Stamp your inside sentiment, and some flowers in the corner, on a 2 7/8" x 5 1/2" piece of Basic white cardstock. Color the flowers the same as the ones on the front of the card and adhere the piece to the inside of the card.

# A Country Flowers CASE

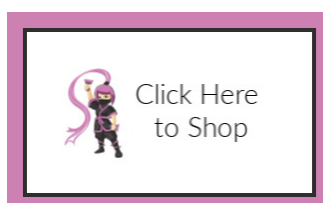
Melissa Sepowitz  
[melissa@thestampingninja.com](mailto:melissa@thestampingninja.com)  
[thestampingninja.com](http://thestampingninja.com)



14. Attach three Basic Gary & Smoky Slate Pearls as shown.



Melissa



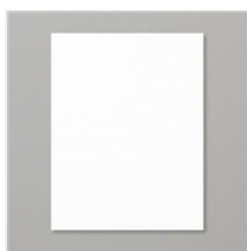
# A Country Flowers CASE

Melissa Sepowitz  
[melissa@thestampingninja.com](mailto:melissa@thestampingninja.com)  
[thestampingninja.com](http://thestampingninja.com)



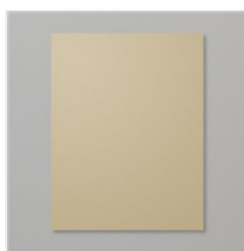
Country Flowers  
Bundle (English) -  
163411

Price: \$53.00



Basic White 8-1/2"  
X 11" Cardstock -  
159276

Price: \$13.00



Crumb Cake 8-1/2"  
X 11" Cardstock -  
120953

Price: \$11.50



Misty Moonlight 8-  
1/2" X 11"  
Cardstock -  
153081

Price: \$11.50



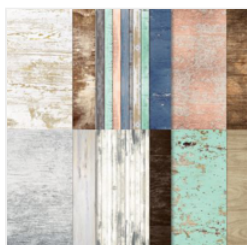
Old Olive 8-1/2" X  
11" Cardstock -  
100702

Price: \$11.50



Smoky Slate 8-1/2"  
X 11" Cardstock -  
131202

Price: \$11.50



Country Woods  
12" X 12" (30.5 X  
30.5 Cm) Designer  
Series Paper -  
163393

Price: \$12.50



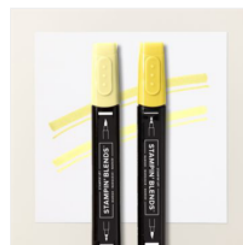
Paper Trimmer -  
152392

Price: \$28.00



Tuxedo Black  
Memento Ink Pad -  
132708

Price: \$8.00



Lemon Lolly  
Stampin' Blends  
Combo Pack -  
161673

Price: \$11.00



Misty Moonlight  
Stampin' Blends  
Combo Pack -  
153108

Price: \$11.00



Old Olive Stampin'  
Blends Combo  
Pack - 154892

Price: \$11.00



Petal Pink  
Stampin' Blends  
Combo Pack -  
154893

Price: \$11.00



Pool Party  
Stampin' Blends  
Combo Pack -  
154894

Price: \$11.00



VersaMark Pad -  
102283

Price: \$9.50

# A Country Flowers CASE

Melissa Sepowitz  
[melissa@thestampingninja.com](mailto:melissa@thestampingninja.com)  
[thestampingninja.com](http://thestampingninja.com)



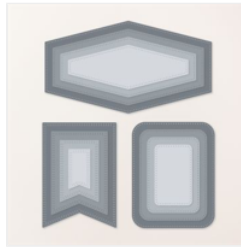
Basics Embossing  
Powders - 155554

Price: \$18.00



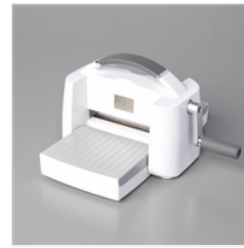
Heat Tool - 129053

Price: \$32.00



Nested Essentials  
Dies - 161597

Price: \$34.00



Stampin' Cut &  
Emboss Machine -  
149653

Price: \$130.00



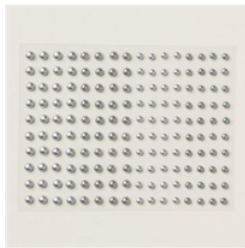
Linen Thread -  
104199

Price: \$5.00



Paper Snips  
Scissors - 103579

Price: \$12.00



Basic Gray &  
Smoky Slate  
Pearls - 163416

Price: \$7.50



Multipurpose  
Liquid Glue -  
110755

Price: \$6.00



Mini Stampin'  
Dimensionals -  
144108

Price: \$4.25



Stampin'  
Dimensionals -  
104430

Price: \$4.25



Stampin' Seal -  
152813

Price: \$8.00

Add All to Cart