

Sunrise Sailing Forever & Always

Melissa Sepowitz
melissa@thestampingninja.com
thestampingninja.com



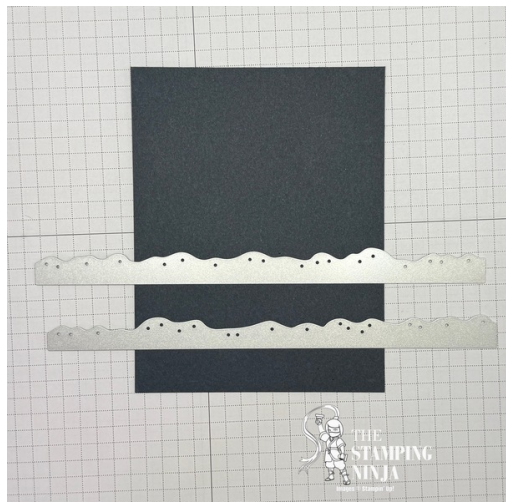
1. Begin with a 5-1/2" piece of Secret Sea cardstock, score and fold at 4-1/4" to form your card base.
2. Layer and adhere a 3-7/8" x 5-1/8" piece of Boho Vibes DSP to a 4" x 5-1/4" piece of Crumb Cake cardstock, and adhere both to the card base.

Sunrise Sailing Forever & Always

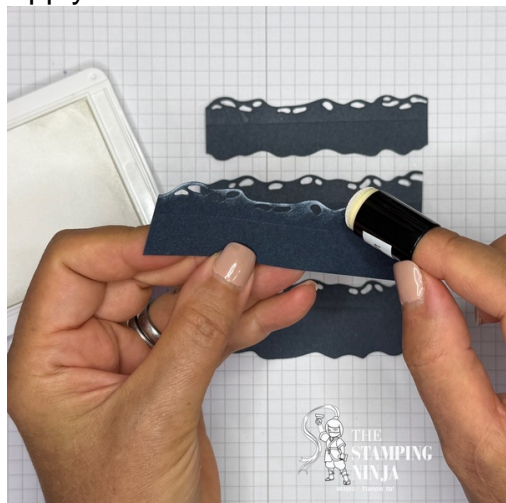
Melissa Sepowitz
melissa@thestampingninja.com
thestampingninja.com



3. Using a 3-3/4" x 4-1/2" piece of Secret Sea cardstock, cut four wave forms out with the two wave dies.



4. Apply some white craft ink to the wave forms using a Sponge Dauber.



5. Lay and adhere the four wave forms to a 3-3/4" x 4-1/2" piece of Cloud Cover cardstock. Start by placing your first piece in the middle, then the subsequent pieces below it.

Sunrise Sailing Forever & Always

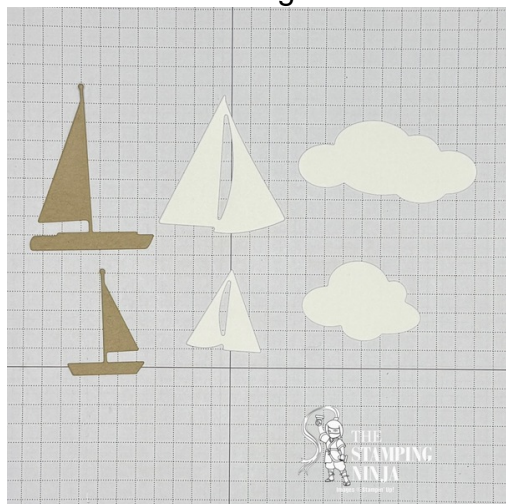
Melissa Sepowitz
melissa@thestampingninja.com
thestampingninja.com



6. Using the 3rd smallest die from the Branching Out dies, cut a rectangle out with the waves at the bottom. (Hint- since the layers are on the thick side, the die will not cut through it all. Just run the die through a couple of times, then cut the uncut layers with your scissors.)



7. Cut the following out with the Sunrise Sailing dies; a small and large sailboat in Crumb Cake, and a small and large sail and small and large cloud in Basic White cardstock.



8. Adhere the sails to the sail boats and the clouds to the card as shown.

Sunrise Sailing Forever & Always

Melissa Sepowitz
melissa@thestampingninja.com
thestampingninja.com



9. Stamp your sentiment on a piece of Cloud Cover cardstock using Secret Sea ink. Then punch the sentiment out with the Labeled With Love punch.
10. Adhere the sentiment to the rectangle with the waves, with a portion hanging off the bottom and right corner, and attach to the card using Stampin' Dimensionals.



11. Apply two small Stampin' Dimensionals to the back of each sail on the sailboats, with a small dab of glue on the body, and adhere to them to the card.



Sunrise Sailing Forever & Always

Melissa Sepowitz
melissa@thestampingninja.com
thestampingninja.com

12. Cut two pieces of Linen Thread, tie them at the same time to form a double bow, and attach to the card using. Mini Glue Dot.



Melissa



Click Here
to Shop

Sunrise Sailing Forever & Always

Melissa Seplowitz
melissa@thestampingninja.com
thestampingninja.com



[Sunrise Sailing Bundle \(English\) - 165497](#)

Price: \$50.25



[Lifetime Of Love Cling Stamp Set \(English\) - 162574](#)

Sale: \$21.25

Price: \$25.00



[Basic White 8-1/2" X 11" Cardstock - 166780](#)

Price: \$14.00



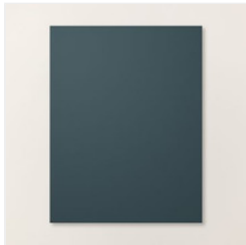
[Cloud Cover 8-1/2" X 11" Cardstock - 165621](#)

Price: \$14.00



[Crumb Cake 8-1/2" X 11" Cardstock - 120953](#)

Price: \$14.00



[Secret Sea 8-1/2" X 11" Cardstock - 165624](#)

Price: \$14.00



[Boho Vibes 6" X 6" \(15.2 X 15.2 Cm\) Designer Series Paper - 165144](#)

Price: \$12.50



[Paper Trimmer - 152392](#)

Price: \$28.00



[Secret Sea Classic Stampin' Pad - 165285](#)

Price: \$9.00



[Unlinked Stampin' Pad & Whisper White Refill - 147277](#)

Price: \$10.50



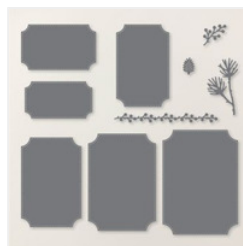
[Sponge Daubers - 133773](#)

Price: \$7.50



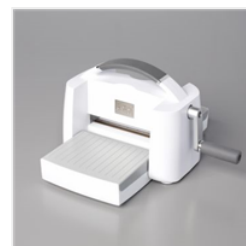
[Labeled With Love Punch - 163569](#)

Price: \$25.00



[Branching Out Dies - 165775](#)

Price: \$29.00



[Stampin' Cut & Emboss Machine - 149653](#)

Price: \$140.00

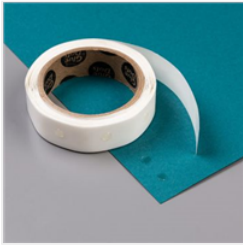


[Linen Thread - 104199](#)

Price: \$5.00

Sunrise Sailing Forever & Always

Melissa Sepowitz
melissa@thestampingninja.com
thestampingninja.com



[Mini Glue Dots -
103683](#)

Price: \$7.25



[Multipurpose
Liquid Glue -
110755](#)

Price: \$6.00



[Stampin'
Dimensionals -
104430](#)

Price: \$4.25

Add All to Cart