

Springtime Scenes - You Brighten My Day

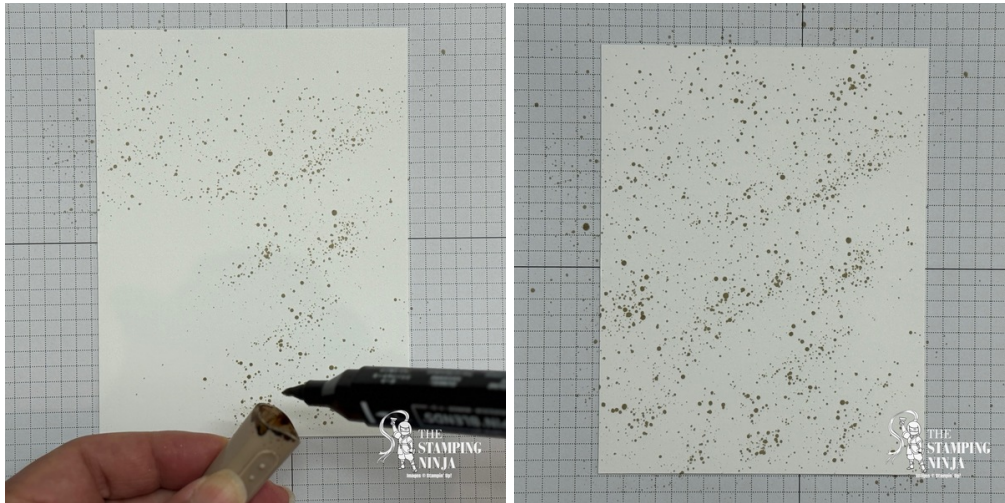
Melissa Sepowitz
melissa@thestampingninja.com
thestampingninja.com



1. Begin with an 8-1/2" x 5-1/2" piece of Basic White Thick cardstock, score and fold at 4-1/4" to form your card base.
2. Lay a 4" x 5-1/4" piece of Basic White cardstock on a protective surface and splatter it with a Crumb Cake (D) Stampin' Blend (place the brush tip in the inside of your cap and "flick" it outwards towards the cardstock). Then, spray the piece with a Stampin' Spritzer filled with Isopropyl alcohol and Wink of Stella.

Springtime Scenes - You Brighten My Day

Melissa Sepowitz
melissa@thestampingninja.com
thestampingninja.com



3. Once dry, sandwich the piece in the Ladybug Picnic embossing folder and run through your Cut & Emboss machine.



4. Stamp a ladybug and three small flowers on a piece of Basic White cardstock using Tuxedo Memento black ink. Color the images with the following Stampin' Blends; Basic Black (L), Daffodil Delight, Smoky Slate (D), and Strawberry Slush (D).

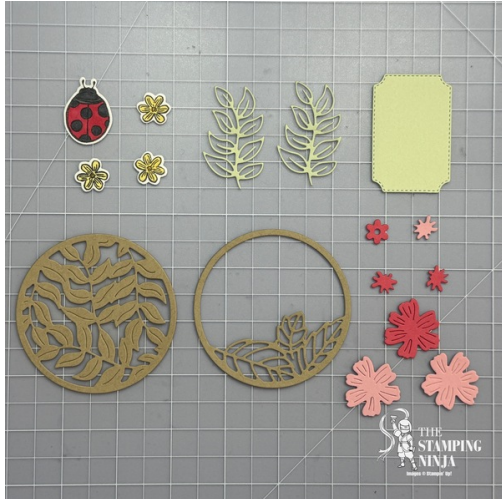


5. Cut the images out, as well as a large circle with leaves and a large circle with a few leaves

Springtime Scenes - You Brighten My Day

Melissa Sepowitz
melissa@thestampingninja.com
thestampingninja.com

in Crumb Cake, a label and two detailed leaves in Soft Sea Foam, a large flower and two flower centers in Pretty in Pink, and two large flowers, a flower center, and a small flower in Strawberry Slush cardstock.



6. Adhere the large Crumb Cake circles together in a diagonal, over-lapping, pattern, then adhere the large flowers, with the opposite color of flower centers together. Next, adhere a large Pretty in Pink, a large Strawberry Slush flower, and a small, stamped flower together, and two of the small, stamped flowers together with a small Strawberry Slush flower.



7. Curl the edges of the die-cut flowers with your Bone Folder.

Springtime Scenes - You Brighten My Day

Melissa Sepowitz
melissa@thestampingninja.com
thestampingninja.com



- Stamp the sentiment in the bottom section of the Soft Sea Foam label using Tuxedo Memento black ink.



- Adhere one of the detailed leaf die-cuts to the upper-right corner of the embossed piece. Then, cut the bottom two leaves off the other one and adhere it on top of the other one, slightly lower and to the right.



- Place the two Crumb Cake circles on top of the embossed piece (do not adhere). Then,

Springtime Scenes - You Brighten My Day

Melissa Sepowitz
melissa@thestampingninja.com
thestampingninja.com

adhere the larger flowers in the top-right section of the circles, and the sentiment in the bottom-left section of the circles. Next, adhere the ladybug, large flower, and set of three small flowers to the label.



11. Flip the entire piece over, apply some Mini and regular Stampin' Dimensionals, and adhere to the card. Then, apply some more Stampin' Dimensionals to the back of the embossed piece and adhere to the card base.



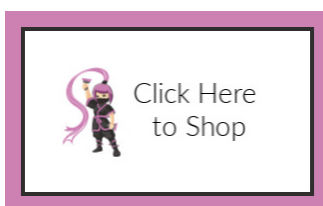
12. Attach three Rhinestone Basic Jewels to the center of the large flowers as shown.

Springtime Scenes - You Brighten My Day

Melissa Sepowitz
melissa@thestampingninja.com
thestampingninja.com



Melissa



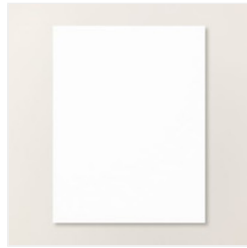
Springtime Scenes - You Brighten My Day

Melissa Sepowitz
melissa@thestampingninja.com
thestampingninja.com



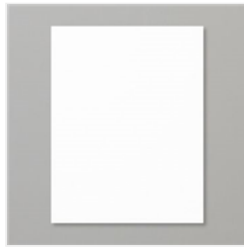
[Springtime Scenes Bundle \(English\) - 167461](#)

Price: \$53.00



[Basic White 8-1/2" X 11" Cardstock - 166780](#)

Price: \$14.00



[Basic White 8-1/2" X 11" Thick Cardstock - 159229](#)

Price: \$17.00



[Crumb Cake 8-1/2" X 11" Cardstock - 120953](#)

Price: \$14.00



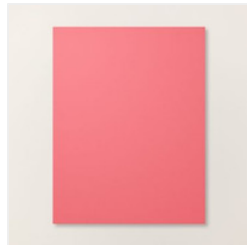
[Pretty In Pink 8-1/2" X 11" Cardstock - 163793](#)

Price: \$14.00



[Soft Sea Foam 8-1/2" X 11" Cardstock - 146988](#)

Price: \$14.00



[Strawberry Slush 8-1/2" X 11" Cardstock - 165625](#)

Price: \$14.00



[Tuxedo Black Memento Ink Pad - 132708](#)

Price: \$8.00



[Crumb Cake Stampin' Blends Combo Pack - 154882](#)

Price: \$11.00



[Daffodil Delight Stampin' Blends Combo Pack - 154883](#)

Price: \$11.00



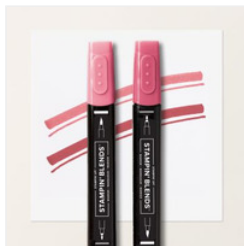
[Basic Black Stampin' Blends Combo Pack - 154843](#)

Price: \$11.00



[Smoky Slate Stampin' Blends Combo Pack - 154904](#)

Price: \$11.00



[Strawberry Slush Stampin' Blends Combo Pack - 165290](#)

Price: \$11.00



[Stampin' Spritzer - 126185](#)

Price: \$6.00



[Wink Of Stella Clear Glitter Brush - 141897](#)

Price: \$10.00

Springtime Scenes - You Brighten My Day

Melissa Sepowitz
melissa@thestampingninja.com
thestampingninja.com



[Ladybug Picnic 3D Embossing Folder - 167478](#)

Price: \$10.00



[Rhinestone Basic Jewels - 144220](#)

Price: \$6.00



[Multipurpose Liquid Glue - 110755](#)

Price: \$6.00



[Mini Stampin' Dimensionals - 144108](#)

Price: \$4.25



[Stampin' Dimensionals - 104430](#)

Price: \$4.25

Add All to Cart